

# North Yorkshire Council Electoral Review Parish and Community Groups Briefing



August 2024

# What is an electoral review?

An electoral review considers the electoral arrangements for a local authority

Number of councillors



Number of divisions



Boundaries between divisions



Names of each division




Number of councillors elected to each division

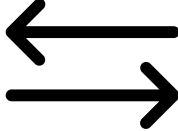


# We review authorities for one of four reasons

**1**   
Poor electoral equality  
(intervention review)

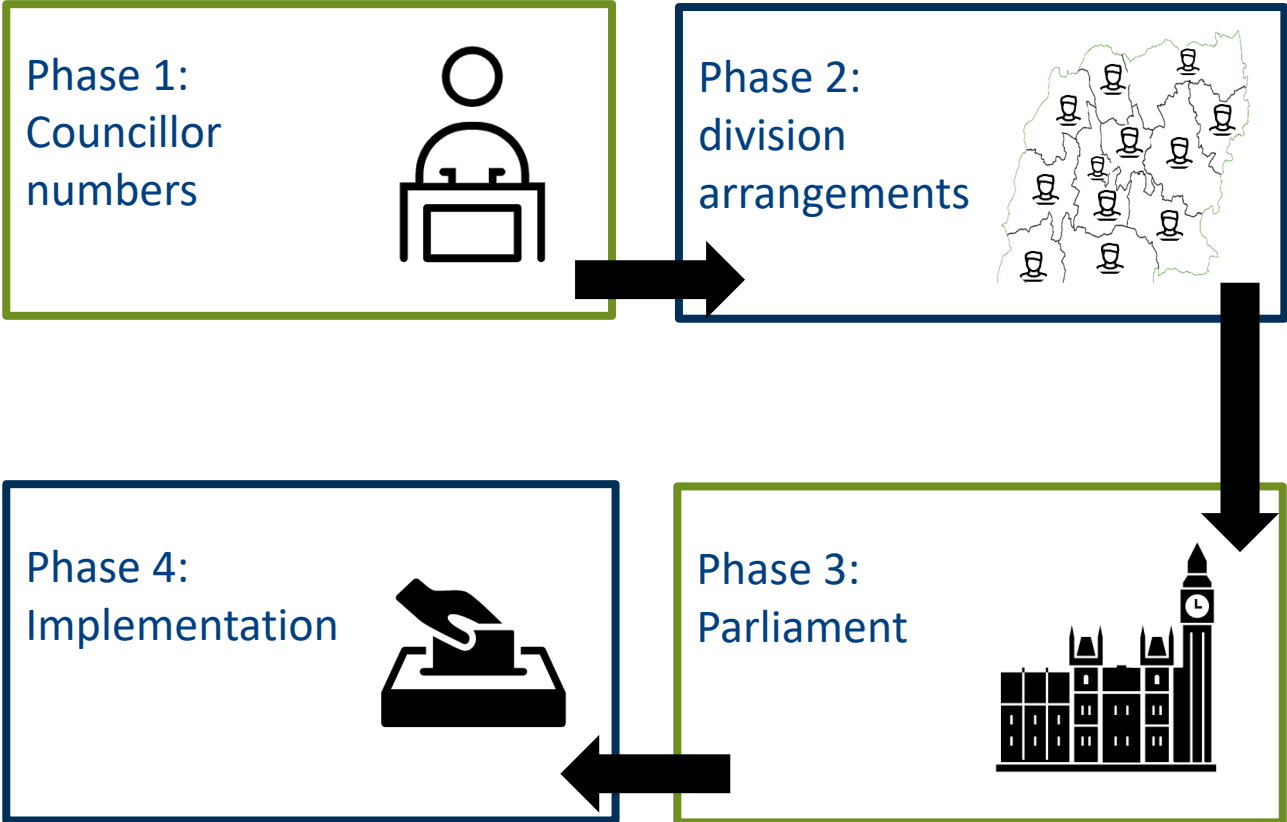
**2**   
Time  
(periodic review)

**3**   
Request from a local  
authority

**4**   
As a result of  
structural change



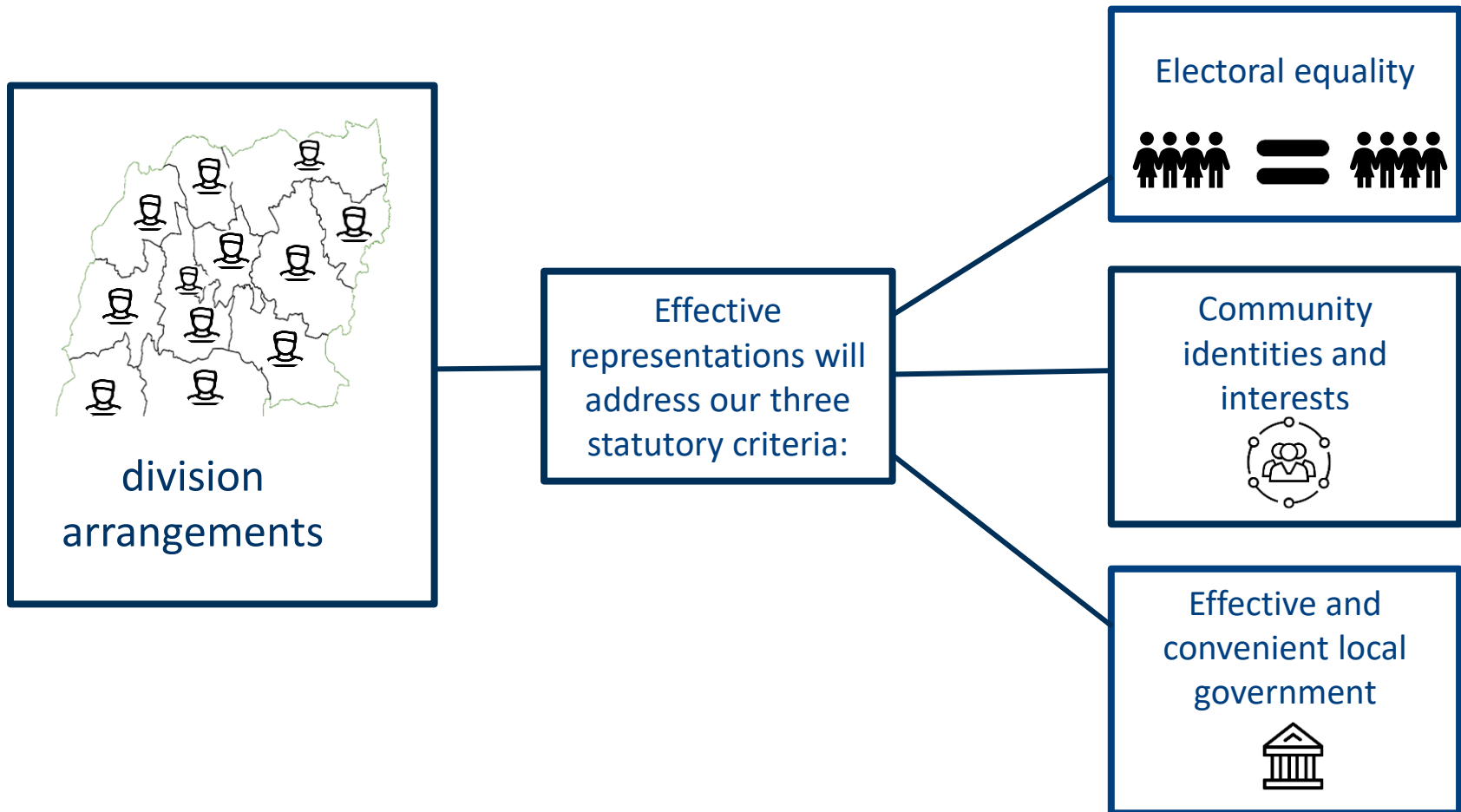
Process:



# Phase 2: division arrangements



# Phase 2: division arrangements (cont.)



# What do we mean by electoral equality?

## The Local Government Boundary Commission for England

### Electoral data

Tonbridge & Malling Borough Council

#### Using this sheet:

Fill in the cells for each polling district. Please make sure that the names of each parish, parish ward and borough ward are correct and consistent. Check your data in the cells to the right.

Scroll right to see the second table

What is the polling district code?	Is there any other description you use for this area?	Is this polling district contained in a parish? If not, leave this cell blank.	Is this polling district contained in a parish ward? If not, leave this cell blank.	Is this polling district contained in a group of parishes with a joint parish council? If not, leave this cell blank.	What ward is this polling district in?	What is the current electorate?	What is the predicted electorate?
------------------------------------	---	--	---	---	--	---------------------------------	-----------------------------------

Polling district	Description of area	Parish	Parish ward	Grouped parish council	Existing ward	Electorate 2021	Electorate 2027
EX1	Example 1	Little Example		Little and Even Littler	Example	480	502
EX2	Example 2	Even Littler Example		Little and Even Littler	Example	67	68
EX3	Example 3	Medium Example			Example	893	893
EX4	Example 4	Big Example	Big Example East		Example	759	780
EX5	Example 5	Big Example	Big Example West		Example	803	824

CAA		Aylesford Parish	North Ward		Aylesford North & Walderlade	586	621
CAB		Aylesford Parish	Blue Bell Hill Ward		Aylesford North & Walderlade	1090	1160
CAC		Aylesford Parish	Eccles Ward		Aylesford North & Walderlade	1330	1425
CAD		Aylesford Parish	Walderlade Ward		Aylesford North & Walderlade	2084	2268
CBA		Aylesford Parish	South Ward		Aylesford South	3838	4135
FAA		Borough Green			Borough Green & Long Mill	3158	3340
FAB		Platt			Borough Green & Long Mill	1356	1443
FAC		Plaxtol			Borough Green & Long Mill	854	919
FAD		Shipbourne			Borough Green & Long Mill	398	414
CCA		Burham			Burham & Wouldham	1050	1122
CCB		Wouldham			Burham & Wouldham	1791	2841
FBA					Cage Green	1823	1928
FBB					Cage Green	1789	1905
TCA					Castle	2048	2193
TCB					Castle	1465	1585
CDA					Ditton	1330	1415
CDB					Ditton	2513	2691
FDA					Downs & Mereworth	657	700
FDB					Downs & Mereworth	359	380
FDC			Village Ward		Downs & Mereworth	568	622
FDD					Downs & Mereworth	614	661
FDE					Downs & Mereworth	660	700
FDF					Downs & Mereworth	421	449
FDG					Downs & Mereworth	292	315
FEA					East Malling	3870	4197
FFA					Hadlow & East Peckham	2547	2724
FFB			Golden Green Ward		Hadlow & East Peckham	432	475
FFC			Hadlow Ward		Hadlow & East Peckham	2519	2690
TGA					Higham	3653	3926
FHA					Hildenborough	1616	1701
FHB					Hildenborough	2140	2299
FIA					Hildenborough	1722	1807

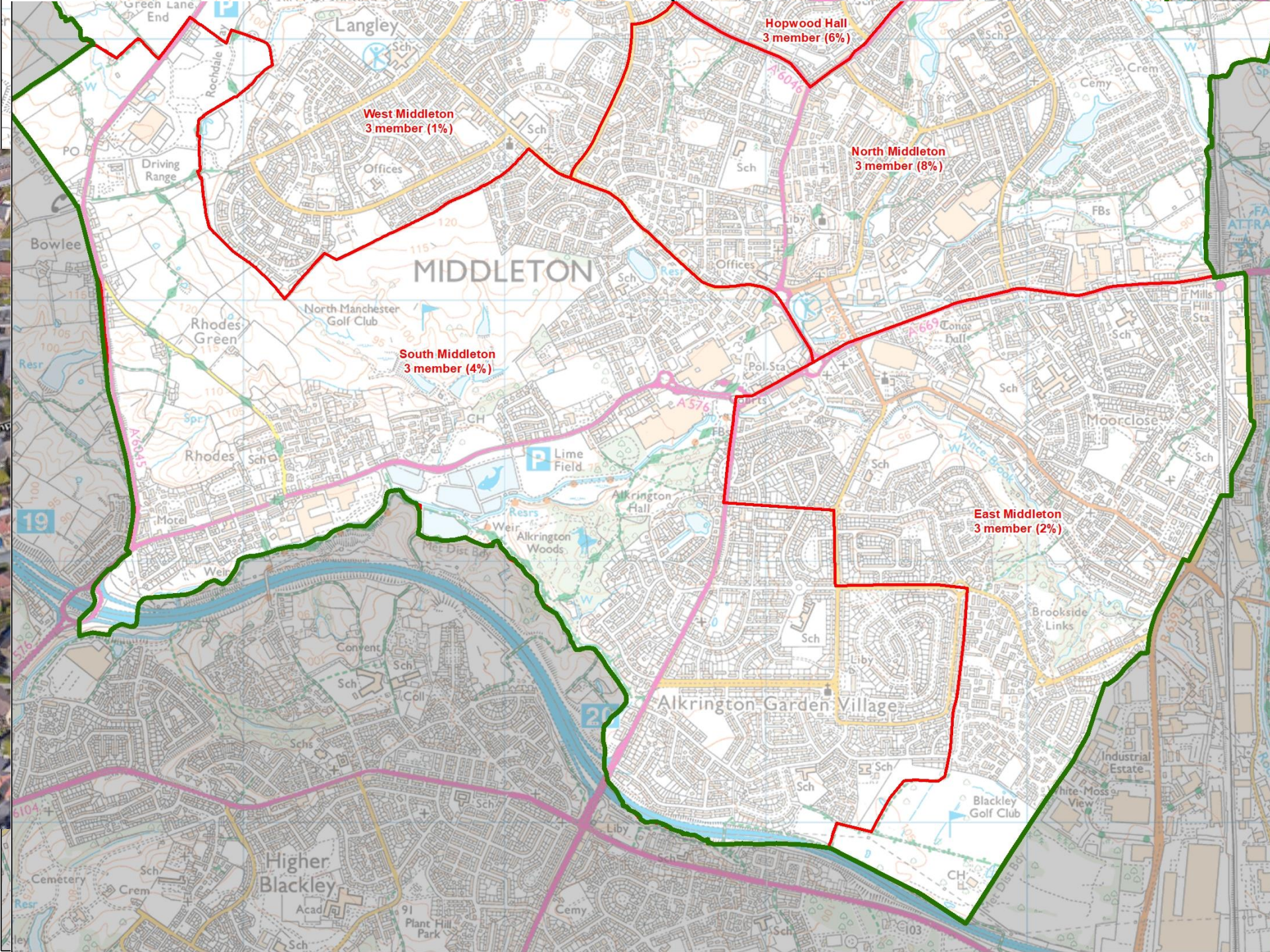
Check your data	2021	2027
Number of councillors:	54	54
Overall electorate:	98,327	106,628
Average electorate per cllr:	1,821	1,978

Scroll left to see the first table

Fill in the name of each ward once	Fill in the number of councillors per ward	These cells will show you the electorate and variance. They change depending what you enter in the table to the left.
------------------------------------	--	---

Name of ward	Number of cllrs per ward	Electorate 2021	Variance 2021	Electorate 2027	Variance 2027
Aylesford North & Walderlade	3	5,090	-7%	5,474	-8%
Aylesford South	2	3,838	5%	4,135	5%
Borough Green & Long Mill	3	5,766	6%	6,116	3%
Burham & Wouldham	2	2,841	-22%	3,963	0%
Cage Green	2	3,612	-1%	3,833	-3%
Castle	2	3,513	-4%	3,778	-5%
Ditton	2	3,843	6%	4,106	4%
Downs & Mereworth	2	3,571	-2%	3,827	-3%
East Malling	2	3,870	6%	4,197	6%
Hadlow & East Peckham	3	5,498	1%	5,889	-1%
Higham	2	3,653	0%	3,926	-1%
Hildenborough	2	3,756	3%	4,000	1%
Judd	2	3,928	8%	4,137	5%
Kings Hill	3	6,509	-13%	7,916	-33%
Larkfield North	2	3,558	-2%	3,798	-4%
Larkfield South	2	3,408	-6%	3,632	-8%
Medway	3	5,372	-2%	5,708	-4%
Snodland East & Ham Hill	2	3,649	0%	3,894	-2%
Snodland West & Holborough Lakes	3	4,929	-10%	5,152	-13%
Trench	2	3,530	-3%	3,802	-4%
Vauxhall	2	3,912	7%	4,125	4%
Wateringbury	1	1,564	-14%	1,688	-15%
West Malling & Leybourne	3	5,632	3%	6,020	1%
Wrotham, Ightham & Stansted	2	3,485	-4%	3,712	-6%





Langley

Hopwood Hall  
3 member (6%)

West Middleton  
3 member (1%)

North Middleton  
3 member (8%)

MIDDLETON

South Middleton  
3 member (4%)

East Middleton  
3 member (2%)

Alkington Garden Village

Higher Blackley

Blackley Golf Club















The  
Local Government  
Boundary Commission

for England

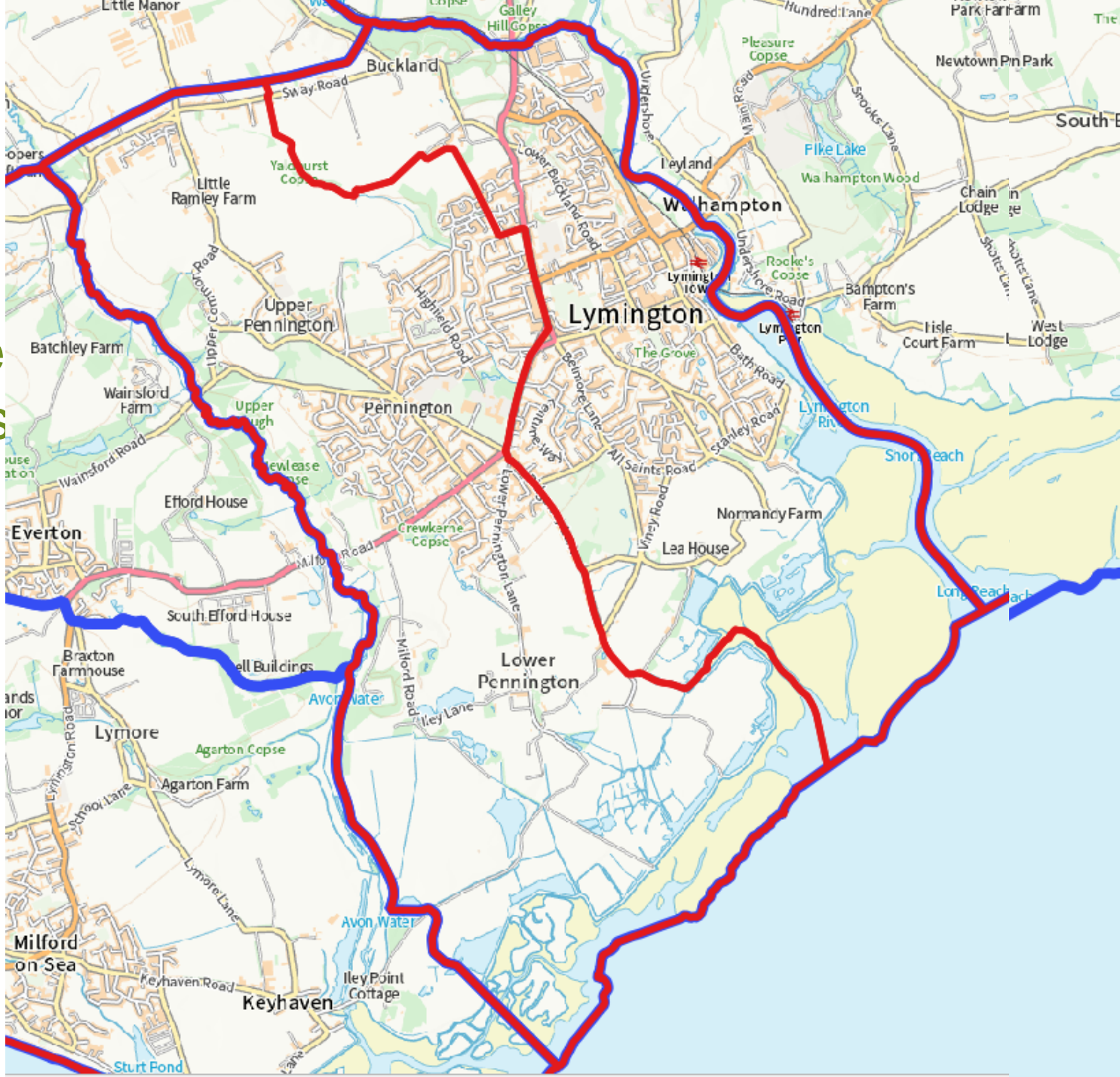


We look for strong and identifiable boundaries that should make it easy for councillors to represent their areas

# Number of councillors per division

Rule  
paris



South  
ssion

## What we can't consider

Political consequences

“It ain't broke, don't fix it” arguments

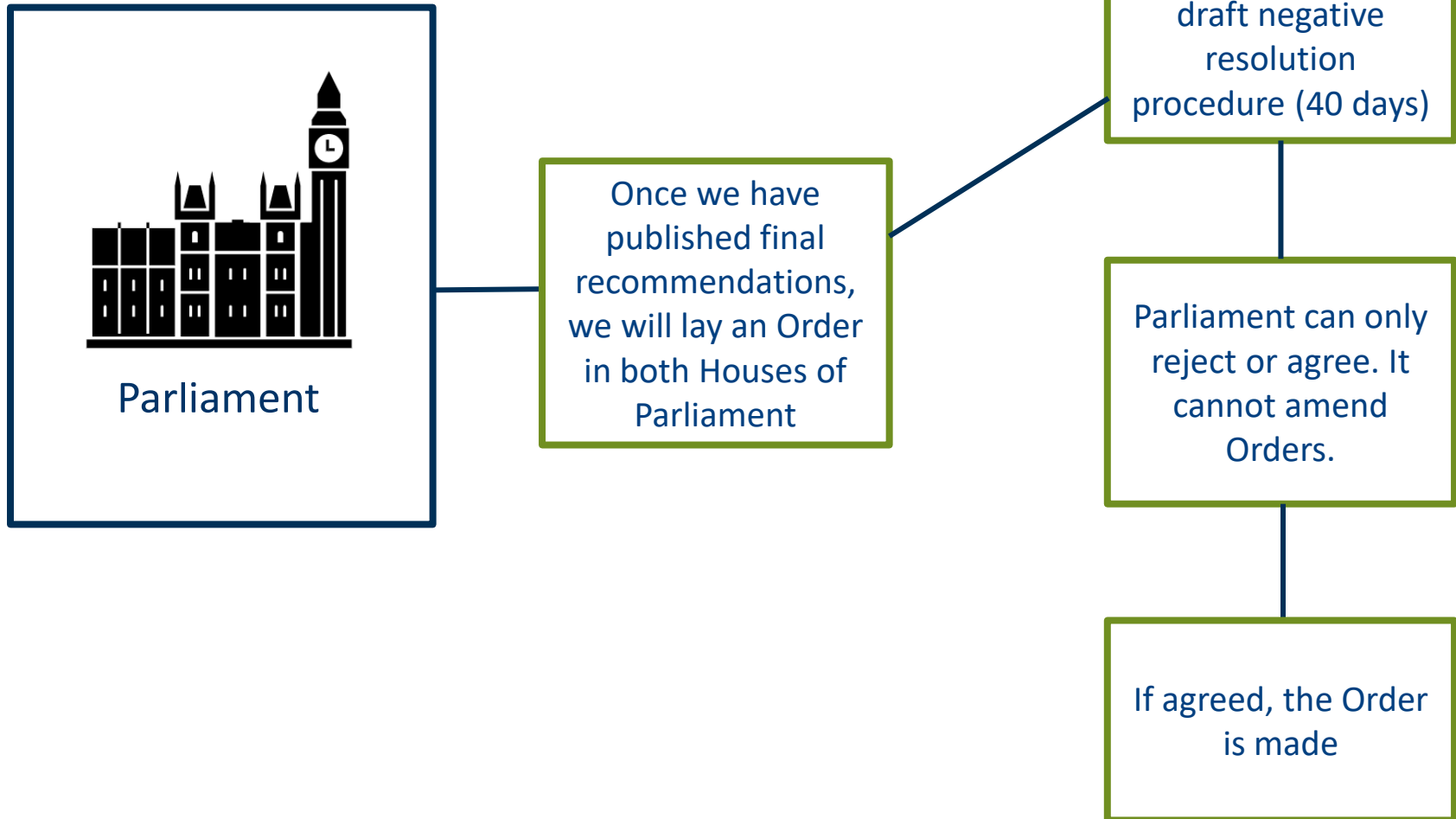
Parliamentary boundaries

Postcodes or addresses

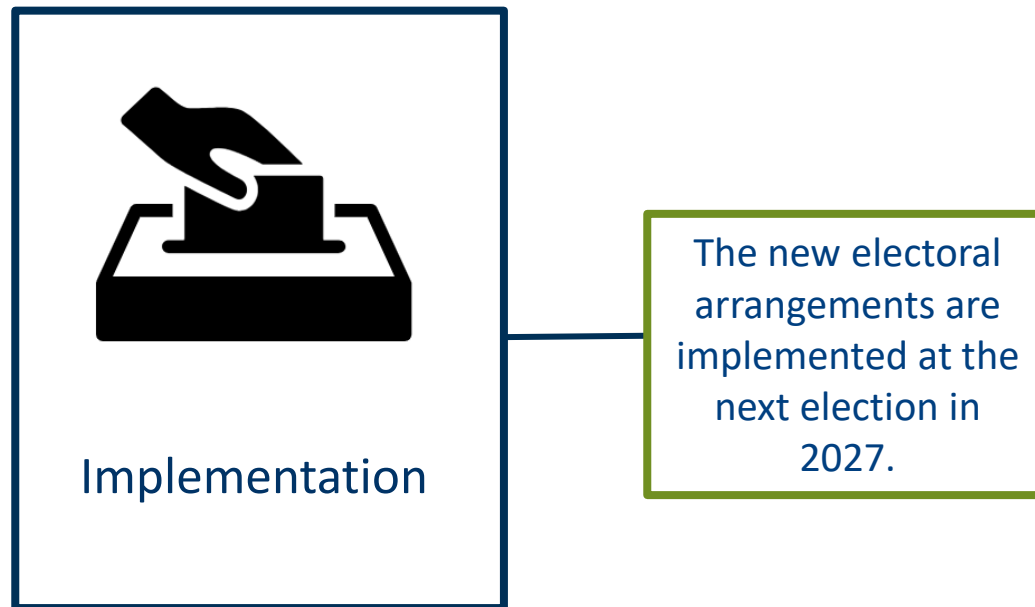
House prices or insurance

The external boundaries for the authority

# Phase 3: Parliament



# Phase 4: Implementation



## How we consult

Write to all key stakeholders in the local area



Social media



Local media



Community briefings



Flyers and posters



Work with your officers



Ask for your help



Questions?

Further questions can be directed to  
[Jonathan.ashby@lgbce.org.uk](mailto:Jonathan.ashby@lgbce.org.uk) or  
[reviews@lgbce.org.uk](mailto:reviews@lgbce.org.uk)